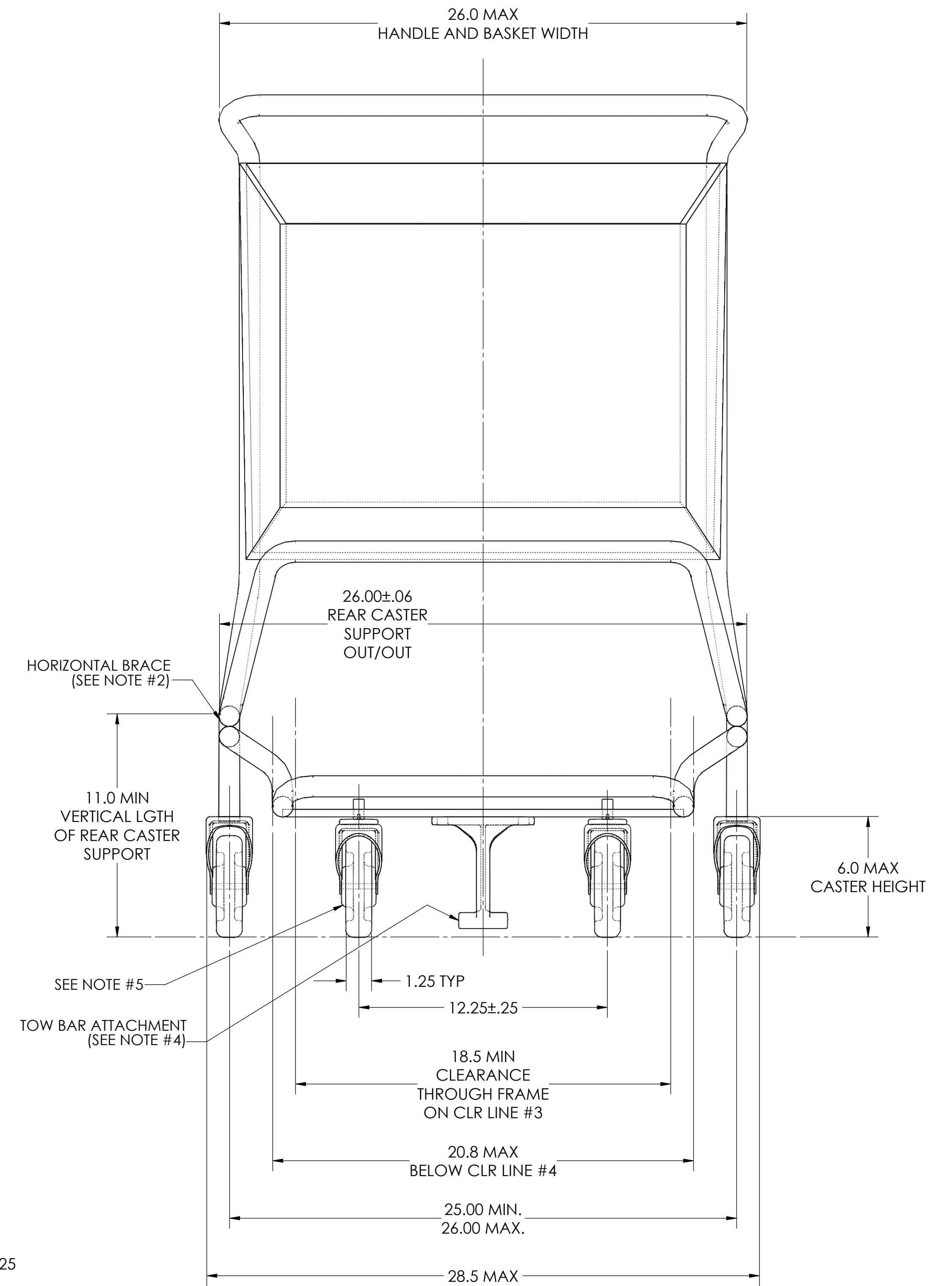
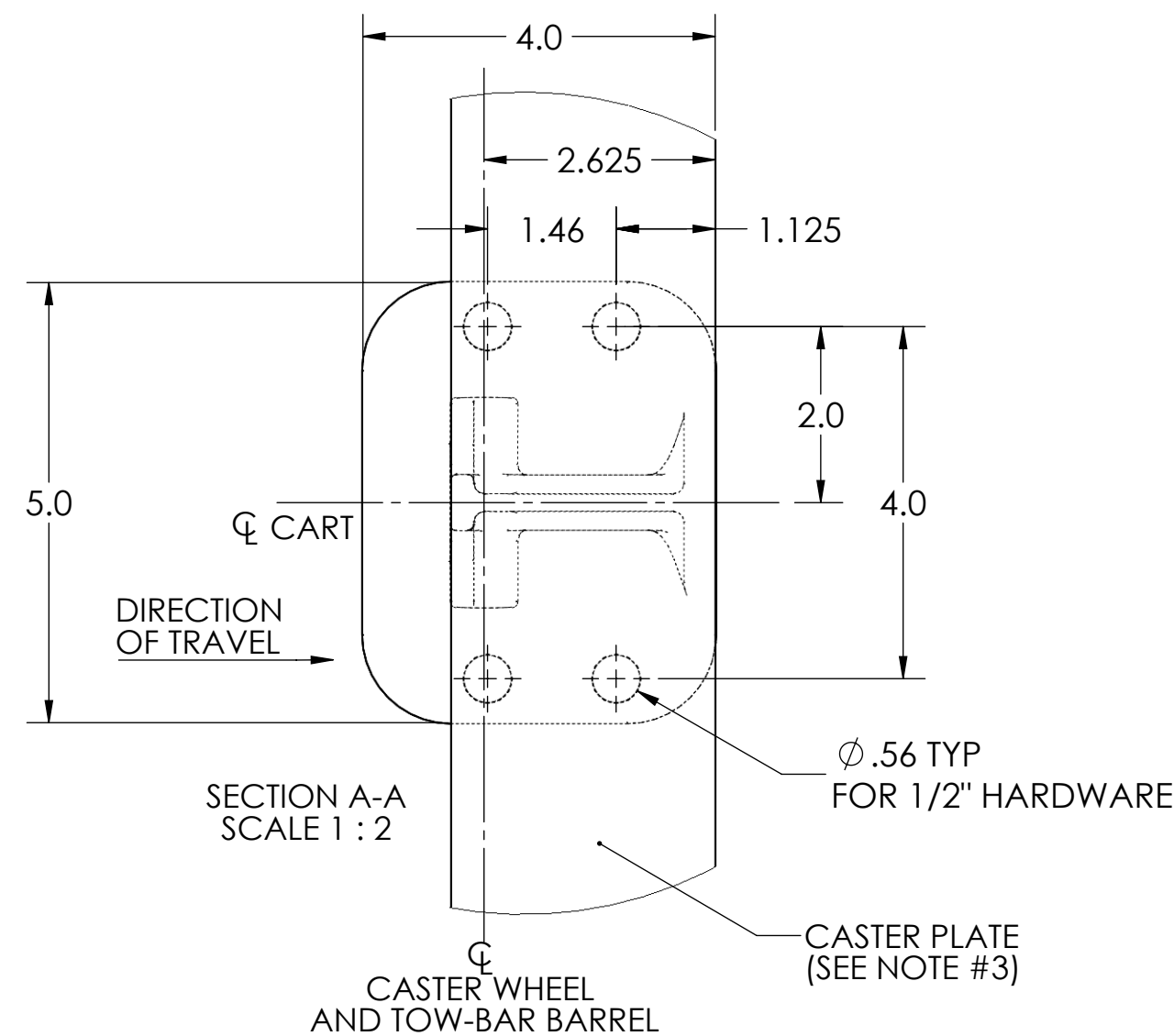


NOTES:

1. UNLESS OTHERWISE NOTED, ALL DIMENSIONS AND TOLERANCES SHOWN ARE CONSTRAINTS FOR DESIGN, NOT MANUFACTURING TOLERANCES.
2. HORIZONTAL BRACE (SHADED SECTION) OF FRAME MUST MAKE BEND FROM LOWER FRAME TOWARD REAR CASTER SUPPORT ABOVE CLR. LINE #2 IN ORDER TO CLEAR CONVEYOR TRACK
3. CASTER PLATE TO BE MIN. .375 x 3.00 A-36 HOT ROLLED FLAT OR 1018 COLD DRAWN FLAT
4. TOW BAR ATTACHMENT TO BE ASSEMBLED TO CART BY CART MANUFACTURER PRIOR TO SHIPMENT TO FINAL CUSTOMER.
5. ANY ANTI-THEFT CASTER TO BE USED MUST BE INSTALLED IN THE RIGHT FRONT POSITION (AS VIEWED WHEN STANDING AT THE CART HANDLE).
6. IF FRAME IS TO EXTEND FORWARD PAST FRONT CASTER PLATE TO ACT AS A BUMPER, IT MUST BEND UPWARD TO CLEAR CLR. LINE #1.
7. ANTI-TIP BRACKETS ON CASTERS ARE NOT ALLOWED.
8. FRONT EDGE OF TOW BAR BARREL TO FURTHEST POINT FORWARD ON CART (FRAME OR BASKET) MUST BE IN THE RANGE GREATER THAN 4.00" AND LESS THAN 8.00"
9. DETAILED TRACK GEOMETRY CAN BE FOUND ON SHEET 2, AND SHOULD BE USED TO VERIFY CART DESIGN.
10. FOR A NEW CART DESIGN TO BE APPROVED FOR USE ON CARTVEYOR EQUIPMENT, PFLOW RECOMMENDS SENDING CAD DATA FOR AN INITIAL ASSESSMENT. A PHYSICAL SAMPLE CART IS REQUIRED FOR FINAL APPROVAL.



TOW BAR ATTACHMENTS	
CARTVEYOR MODEL	TOW BAR PART NO.
MODEL CV (CHAIN)	14167-0000



MATERIAL HANDLING SOLUTIONS

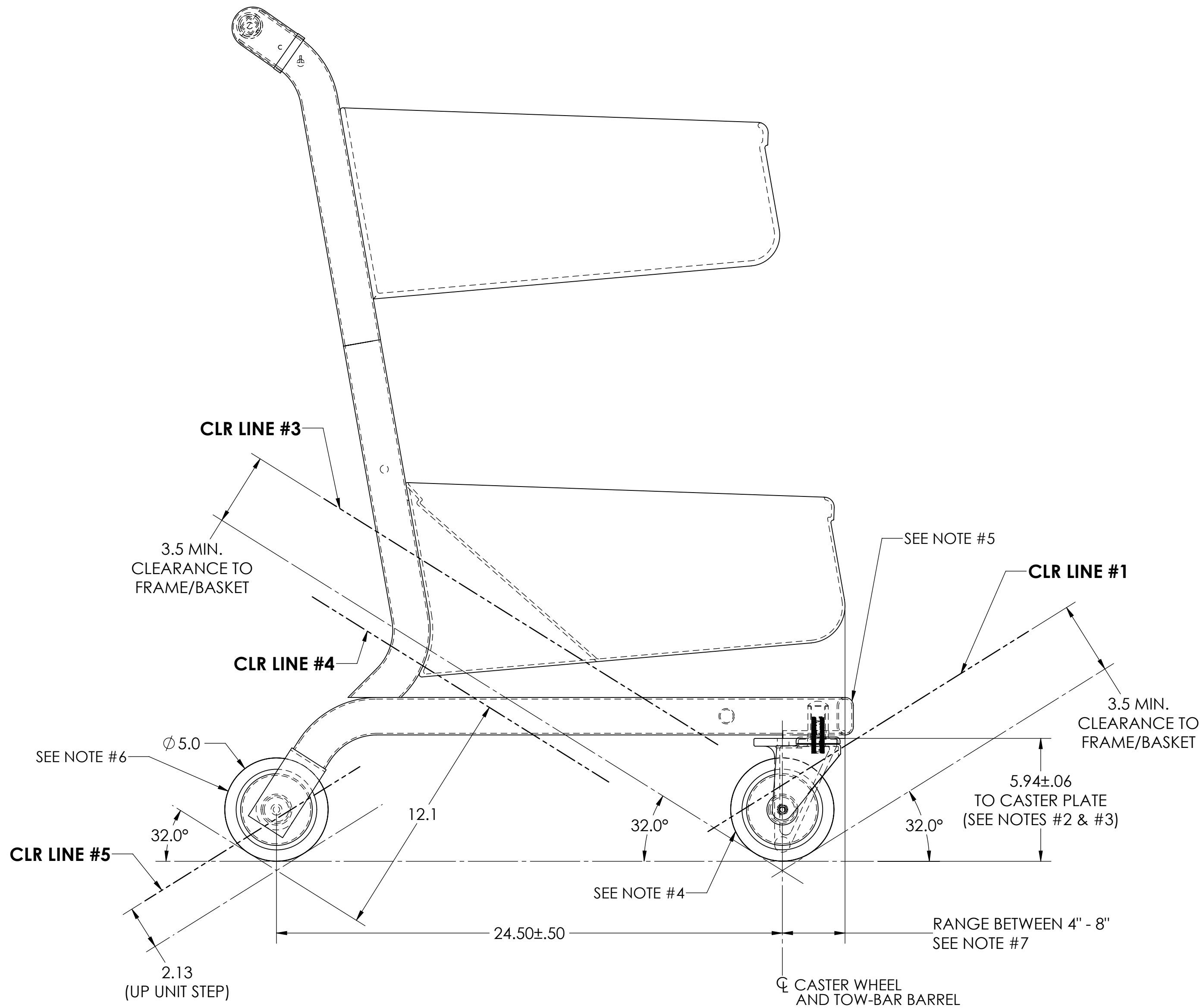
6720 N. TEUTONIA AVE.
MILWAUKEE, WI 53209
P (414) 352-9000
F (414) 352-9002

UNLESS OTHERWISE INDICATED:
ALL DIMENSIONS ARE IN INCHES.
TOLERANCES FRACTIONAL ±1/16
DECIMAL .XX ±.03
XXX ±.015
ANGULAR ±1°
MACH. SURFACE FINISH: 32
DO NOT SCALE DRAWINGS

THIS PRINT INCLUDING THE DESIGN AND PRINCIPLES OF CONSTRUCTION IS THE PROPERTY OF PFLOW INDUSTRIES, INC. AND MUST BE RETURNED ON DEMAND. THE INFORMATION CONTAINED HEREON IS CONFIDENTIAL AND MAY NOT BE USED NOR DIVULGED WITHOUT PERMISSION OF PFLOW INDUSTRIES, INC.

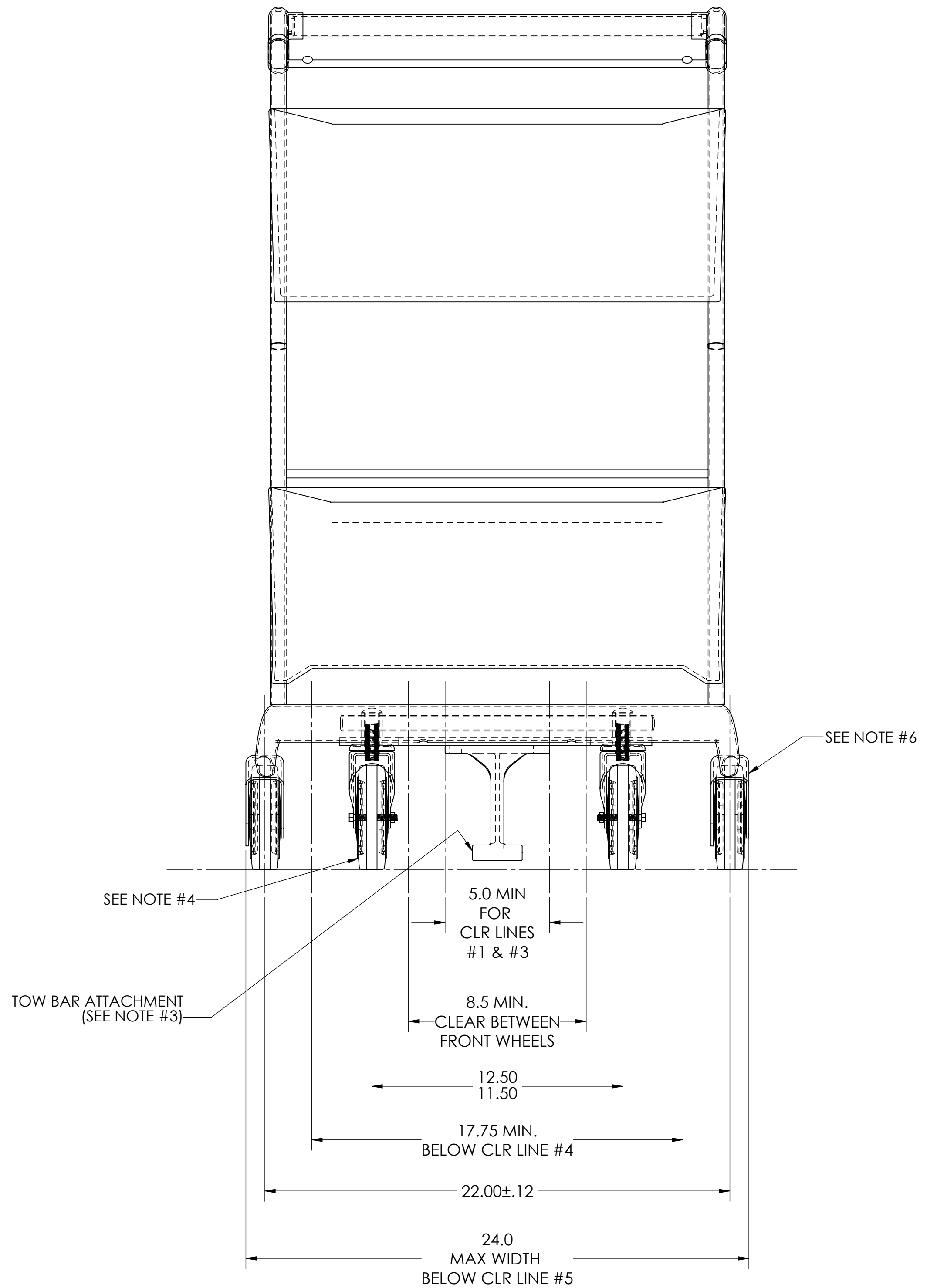
TITLE
DUAL TRACK (DCV) OUTER TRACK SHOPPING CART

REV.	DATE	BY	ECN	ESTIMATED WEIGHT (LBS)	DATE	SCALE	DRAWING NUMBER	SHT	REV
REVISIONS					01-30-2015	1:4	16490-2000	1	-
REF.	10600-0000	DRAWN	JRE	CHECKED					



NOTES:

1. UNLESS OTHERWISE NOTED, ALL DIMENSIONS AND TOLERANCES SHOWN ARE CONSTRAINTS FOR DESIGN, NOT MANUFACTURING TOLERANCES.
2. CASTER PLATE TO BE MIN. .375 x 3.00 A-36 HOT ROLLED FLAT OR 1018 COLD DRAWN FLAT
3. TOW BAR ATTACHMENT TO BE ASSEMBLED TO CART BY CART MANUFACTURER PRIOR TO SHIPMENT TO FINAL CUSTOMER.
4. ANY ANTI-THEFT CASTER TO BE USED MUST BE INSTALLED IN THE RIGHT FRONT POSITION (AS VIEWED WHEN STANDING AT THE CART HANDLE).
5. IF FRAME IS TO EXTEND FORWARD PAST FRONT CASTER PLATE TO ACT AS A BUMPER, IT MUST BEND UPWARD TO CLEAR CLR. LINE #1.
6. ANTI-TIP BRACKETS ON CASTERS ARE NOT ALLOWED.
7. FRONT EDGE OF TOW BAR BARREL TO FURTHEST POINT FORWARD ON CART (FRAME OR BASKET) MUST BE IN THE RANGE GREATER THAN 4.00" AND LESS THAN 8.00"
8. DETAILED TRACK GEOMETRY CAN BE FOUND ON SHEET 2, AND SHOULD BE USED TO VERIFY CART DESIGN.
9. FOR A NEW CART DESIGN TO BE APPROVED FOR USE ON CARTVEYOR EQUIPMENT, PFLOW RECOMMENDS SENDING CAD DATA FOR AN INITIAL ASSESSMENT. A PHYSICAL SAMPLE CART IS REQUIRED FOR FINAL APPROVAL.



MATERIAL HANDLING SOLUTIONS

6720 N. TEUTONIA AVE.
MILWAUKEE, WI 53209
P (414) 352-9000
F (414) 352-9002

UNLESS OTHERWISE INDICATED:
ALL DIMENSIONS ARE IN INCHES.
TOLERANCES: FRACTIONAL: ±1/16
DECIMAL: .XX ±.03
XXX ±.015
ANGULAR: ±1°
MACH. SURFACE FINISH: 259
DO NOT SCALE DRAWINGS

THIS PRINT INCLUDING THE DESIGN AND PRINCIPLES OF CONSTRUCTION IS THE PROPERTY OF PFLOW INDUSTRIES, INC. AND MUST BE RETURNED ON DEMAND. THE INFORMATION CONTAINED HEREON IS CONFIDENTIAL AND MAY NOT BE USED NOR DIVULGED WITHOUT PERMISSION OF PFLOW INDUSTRIES, INC.

TITLE
DIMENSIONAL INFORMATION
DUAL TRACK (DCV) INNER TRACK SHOPPING CART

REV.	DATE	BY	ECN	ESTIMATED WEIGHT (LBS)	DATE	SCALE	DRAWING NUMBER	SHT	REV
REVISIONS					01-30-2015	1:4	16490-2000	2	-
REF.	10600-0000	DRAWN	JRE	CHECKED				OF	3

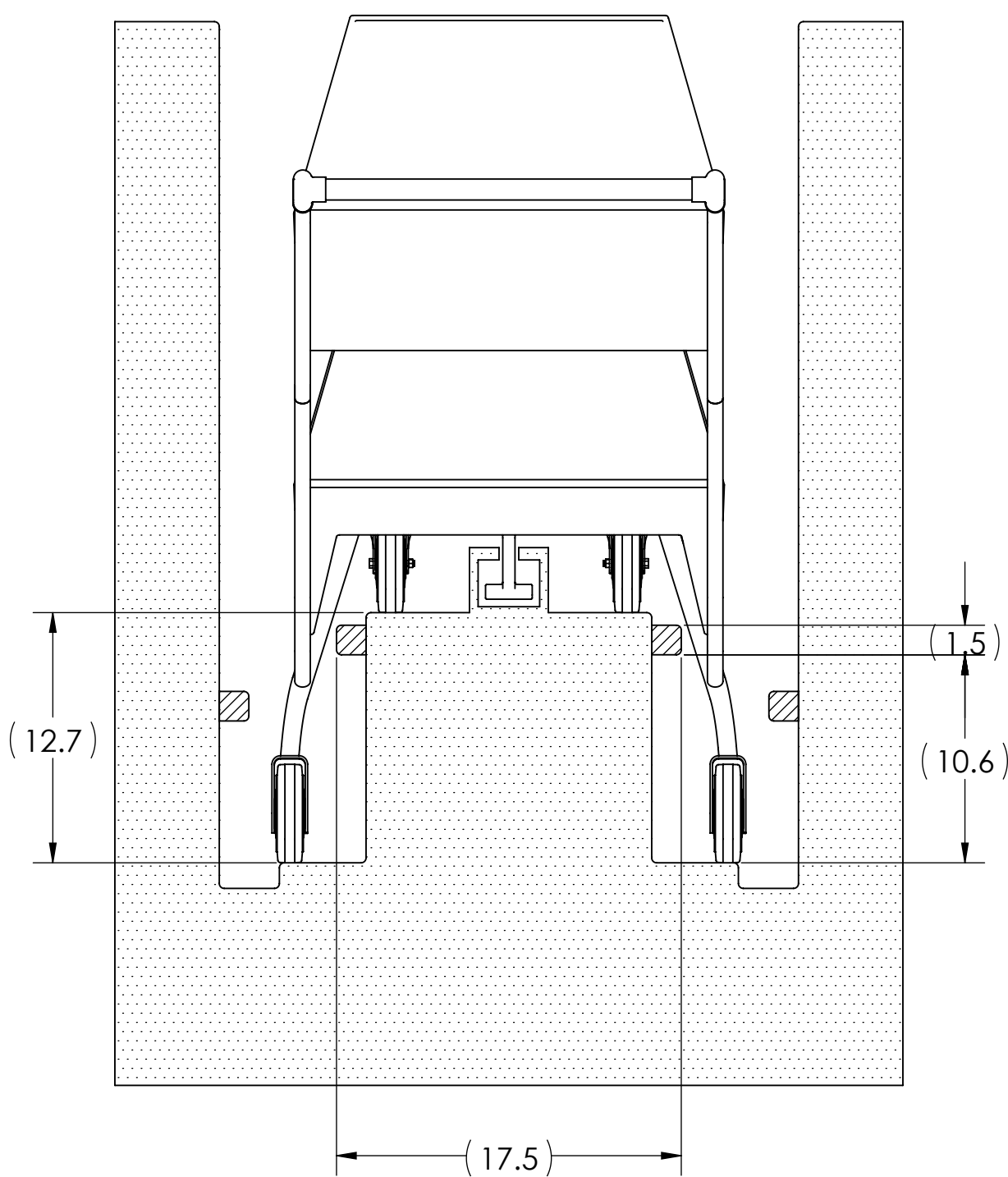
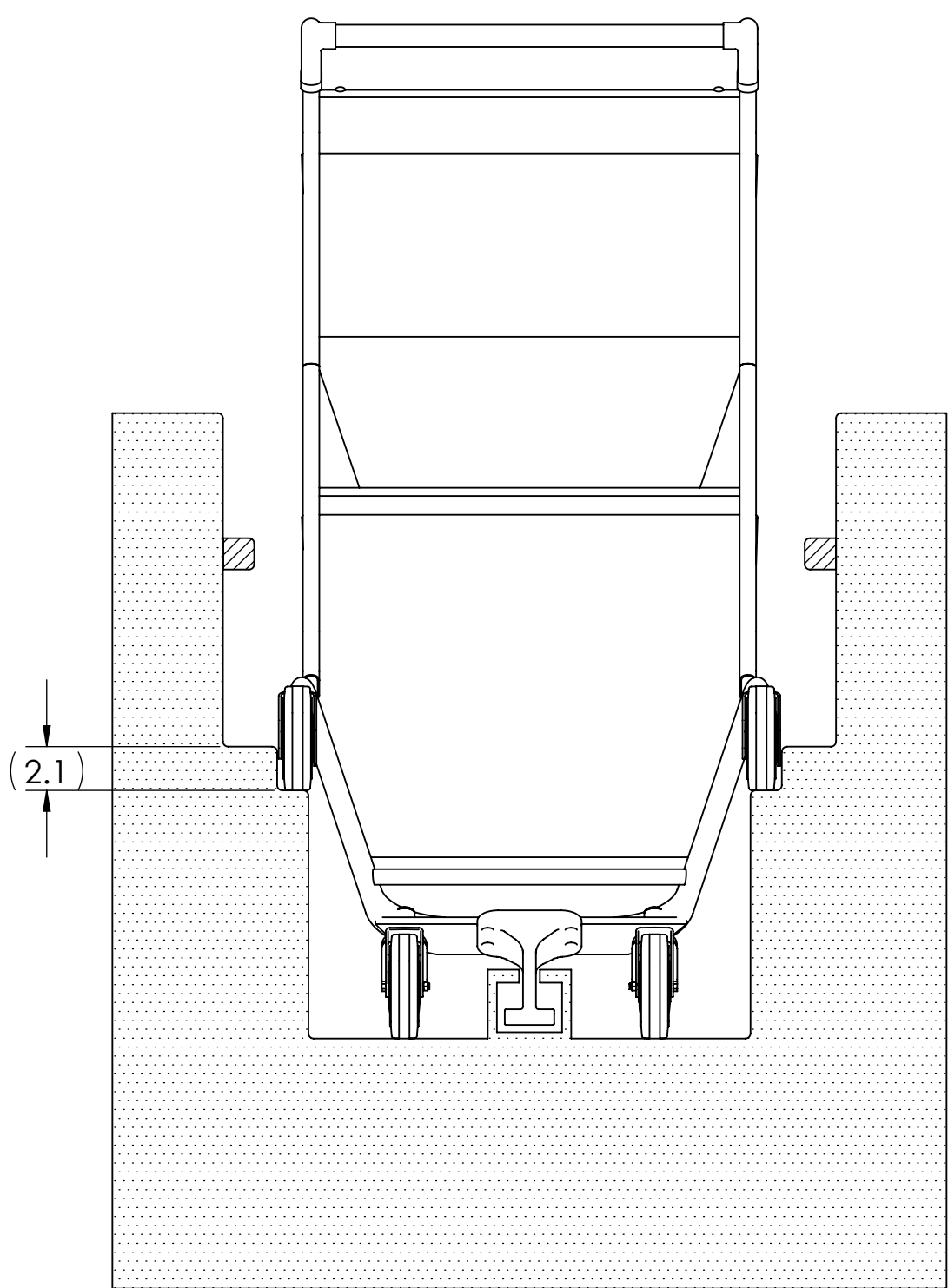
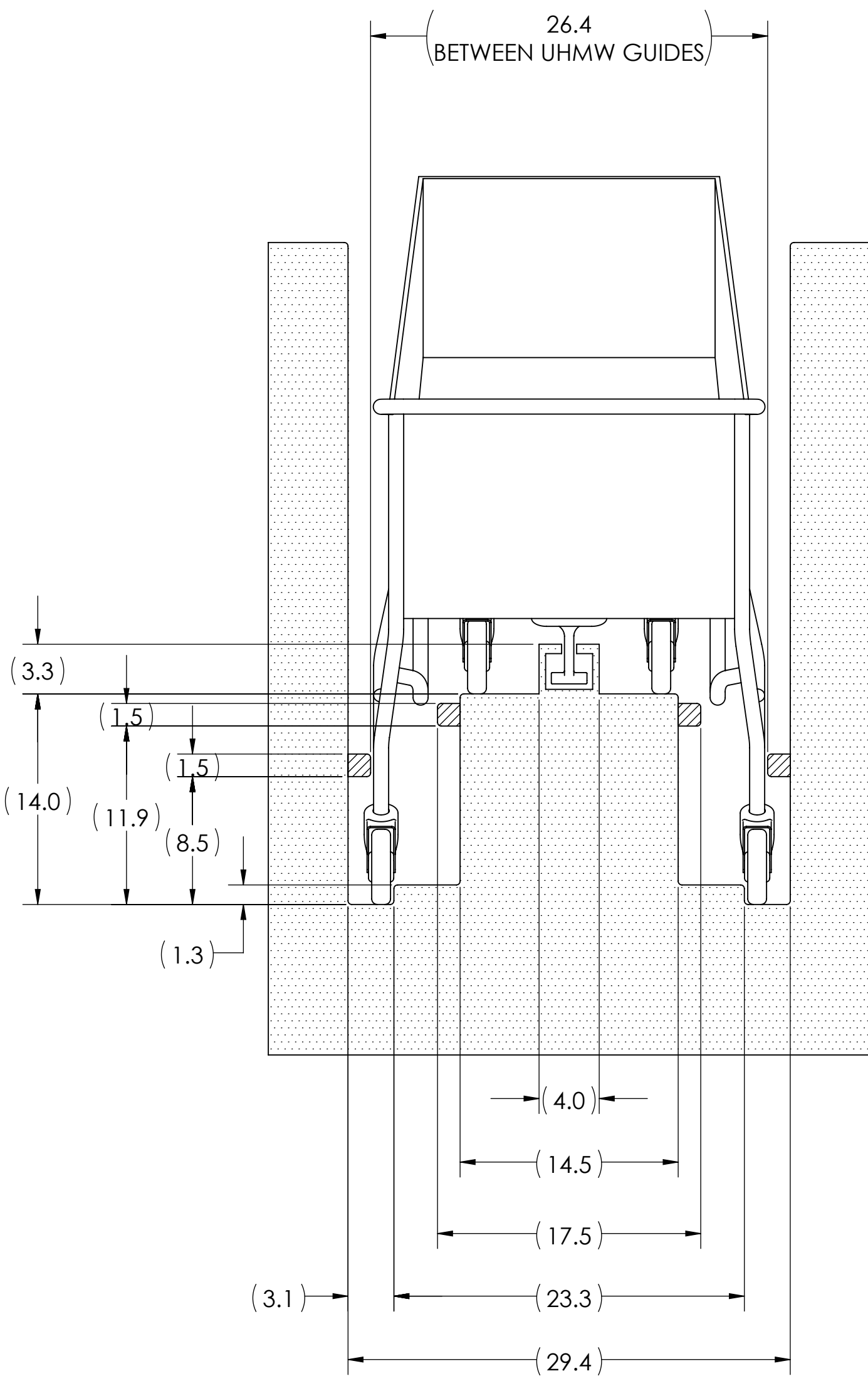
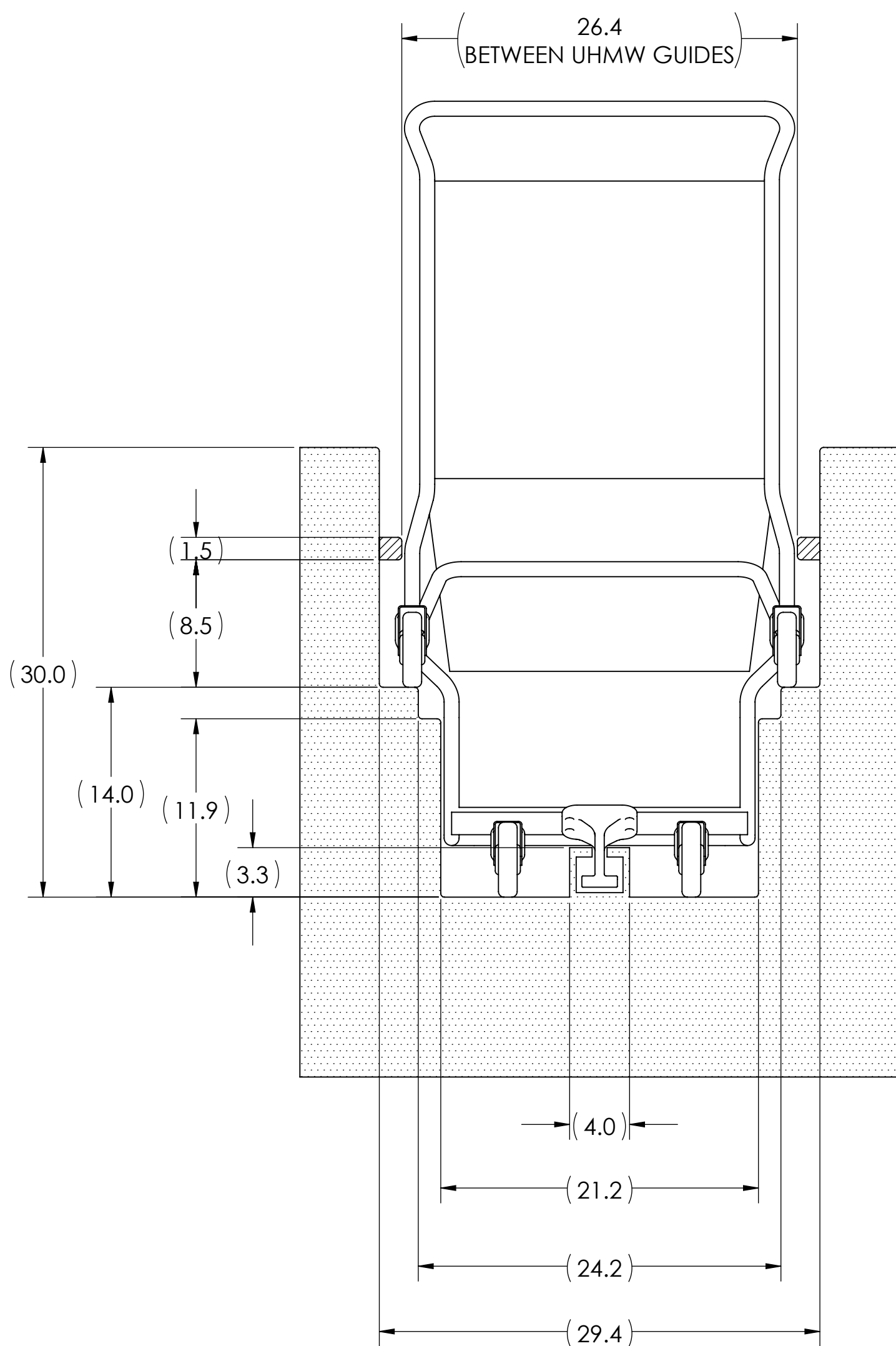
TYPICAL SECTIONS THRU
MID-TRUSS

UP UNIT
CART ON OUTER TRACK

DOWN UNIT
CART ON OUTER TRACK

UP UNIT
CART ON INNER TRACK

DOWN UNIT
CART ON INNER TRACK



SECTION VIEW A
DUAL-TRACK CARTVEYOR

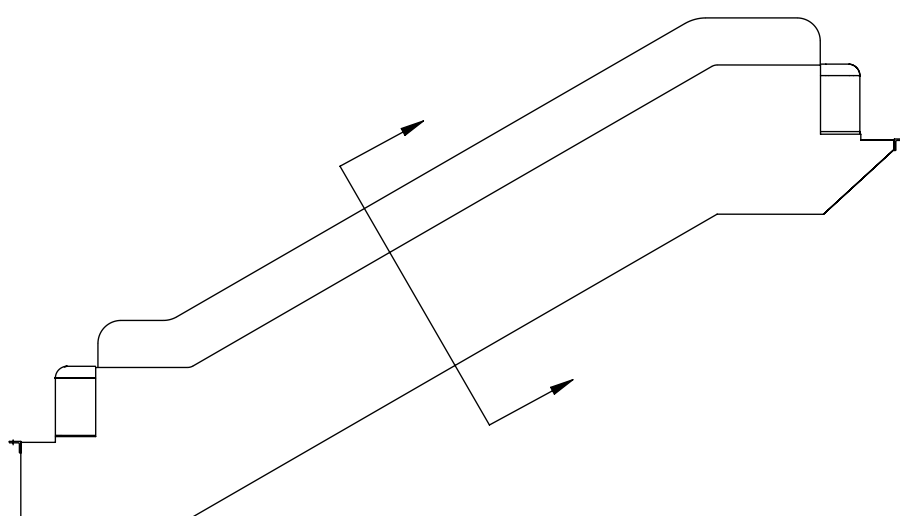
SECTION VIEW B
DUAL-TRACK CARTVEYOR

SECTION VIEW C
DUAL-TRACK CARTVEYOR

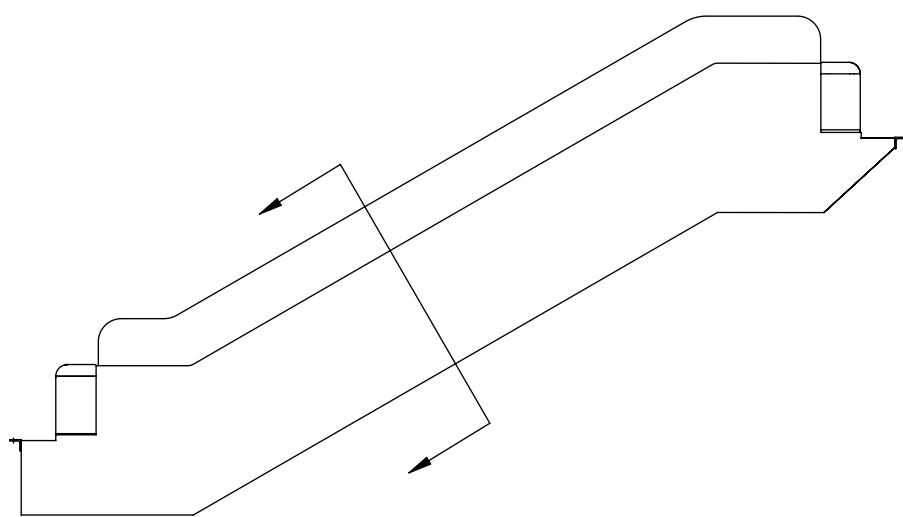
SECTION VIEW D
DUAL-TRACK CARTVEYOR

(DIMENSIONALLY IDENTICAL
TO VIEW A)

(DIMENSIONALLY IDENTICAL
TO VIEW B)



UP UNIT
CROSS-SECTIONS



DOWN UNIT
CROSS-SECTIONS



MATERIAL HANDLING SOLUTIONS

6720 N. TEUTONIA AVE.
MILWAUKEE, WI 53209
P (414) 352-9000
F (414) 352-9002

UNLESS OTHERWISE INDICATED:
ALL DIMENSIONS ARE IN INCHES.
TOLERANCES: FRACTIONAL: $\pm 1/16$
DECIMAL: $\pm .03$
ANGULAR: $\pm 1^\circ$
MACH. SURFACE FINISH: 25μ
DO NOT SCALE DRAWING

THIS PRINT INCLUDING THE DESIGN AND PRINCIPLES OF CONSTRUCTION IS THE
PROPERTY OF PFLOW INDUSTRIES, INC. AND MUST BE RETURNED ON DEMAND.
THE INFORMATION CONTAINED HEREON IS CONFIDENTIAL AND MAY NOT BE
USED NOR DIVULGED WITHOUT PERMISSION OF PFLOW INDUSTRIES, INC.

TITLE
DUAL TRACK (DCV) CARTVEYOR - SHOPPING CARTS

REV.	DATE	BY	ECN	ESTIMATED WEIGHT (LBS)	DATE	SCALE	DRAWING NUMBER	SHT	REV
REVISIONS					01-30-2015	1:8	16490-2000	3	-
REF.	10600-0000	DRAWN	JRE	CHECKED					